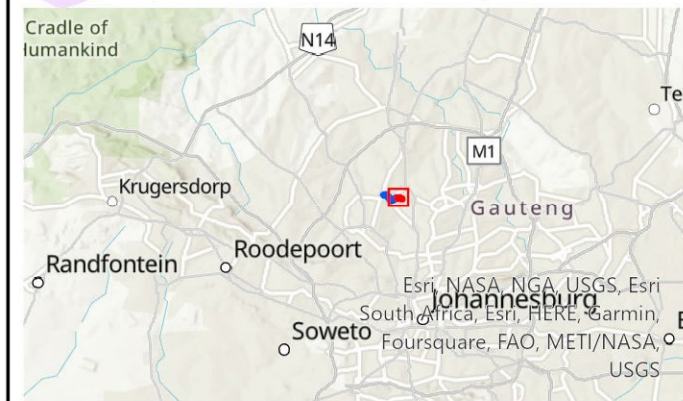


Site Layout

1433 Selkirk Avenue Development Pipeline BA

Legend

- Places
- Proposed Sewer Pipeline
 - Authorisation Not Required
 - Authorisation Required
- ~ Rivers
- Affected_properties
- 1:100 year floodline
- Delineated Wetlands
 - Channelled Valley Bottom
 - Seep 3
 - Seep1
 - Seep 2
 - Stormwater
 - Channels
 - Braamfontein Spruit
- Gauteng Conservation Plan
 - Ecological Support Area
 - Important Area: Critical Biodiversity Area



Data Sources:

CSG; ESRI
 Coord System: GCS WGS 1984
 Datum: WGS 1984
 Units: Degree
 Ref: Proposed Sewer Pipeline 1433_Site Layout

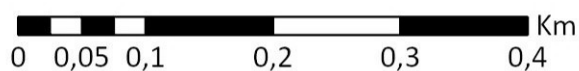
Date: 2023/02/28

EIMS Ref:1433

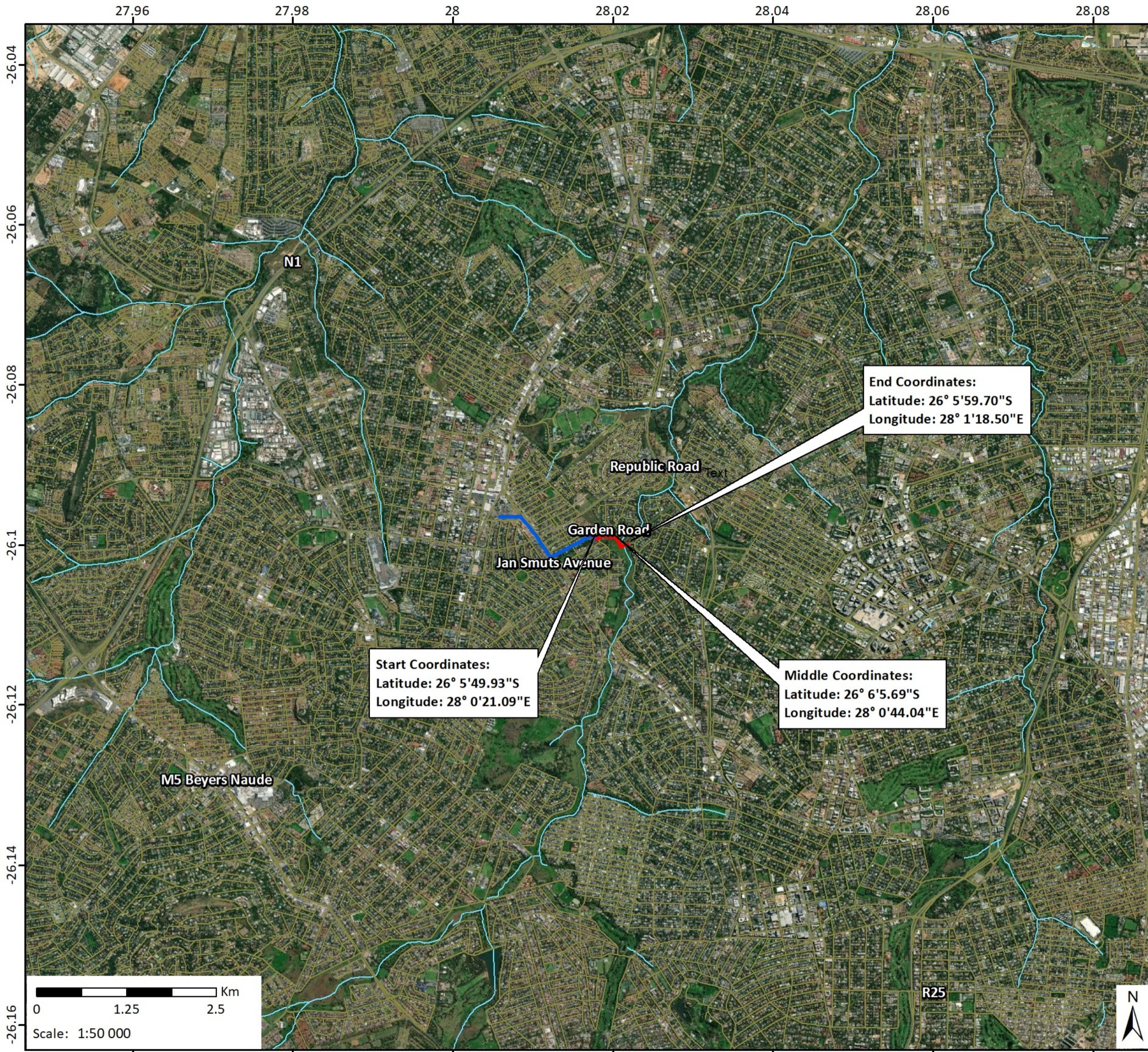
Compiled: CM

Reviewed: BK

Approved: LW








Scale: 1:5 934



Proposed Sewer Pipeline Locality
1433 Selkirk Avenue Development Pipeline BA

Legend

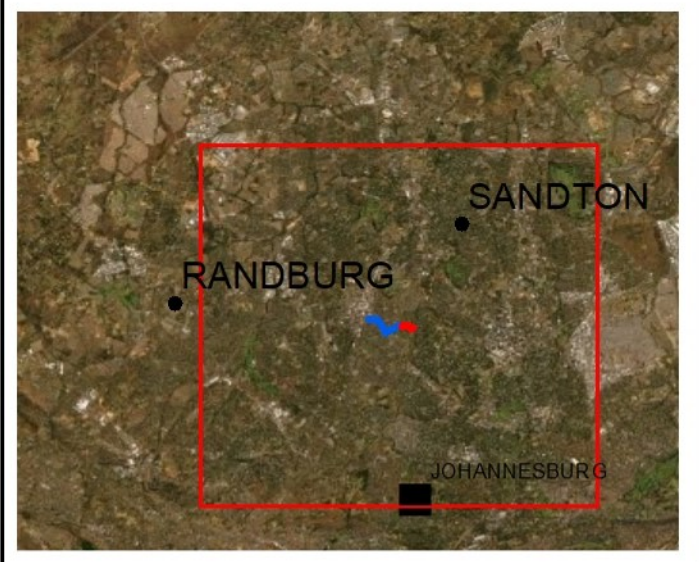
Proposed Sewer Pipeline

-  Authorisation Not Required
-  Authorisation Required
-  Places
-  Roads
-  Rivers

End Coordinates:
Latitude: 26° 5'59.70"S
Longitude: 28° 1'18.50"E

Start Coordinates:
Latitude: 26° 5'49.93"S
Longitude: 28° 0'21.09"E

Middle Coordinates:
Latitude: 26° 6'5.69"S
Longitude: 28° 0'44.04"E



Data Sources:
CSG; ESRI
Coord System: GCS WGS 1984
Datum: WGS 1984
Units: Degree
Ref: Proposed Sewer Pipeline Locality

Date: 2021/06/25
EIMS Ref:1433
Compiled: CM
Reviewed: BK
Approved: LW





Delineated Wetlands

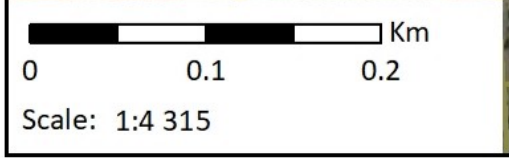
1433 Selkirk Avenue Development Pipeline BA

Legend

- Proposed Sewer Pipeline
 - ↗↘ Authorisation Not Required
 - ↗↘ Authorisation Required
- Places
- Pipeline Crossing
- Seep 1
- Seep 2
- Seep 3
- Roads
- Channels
- Stormwater

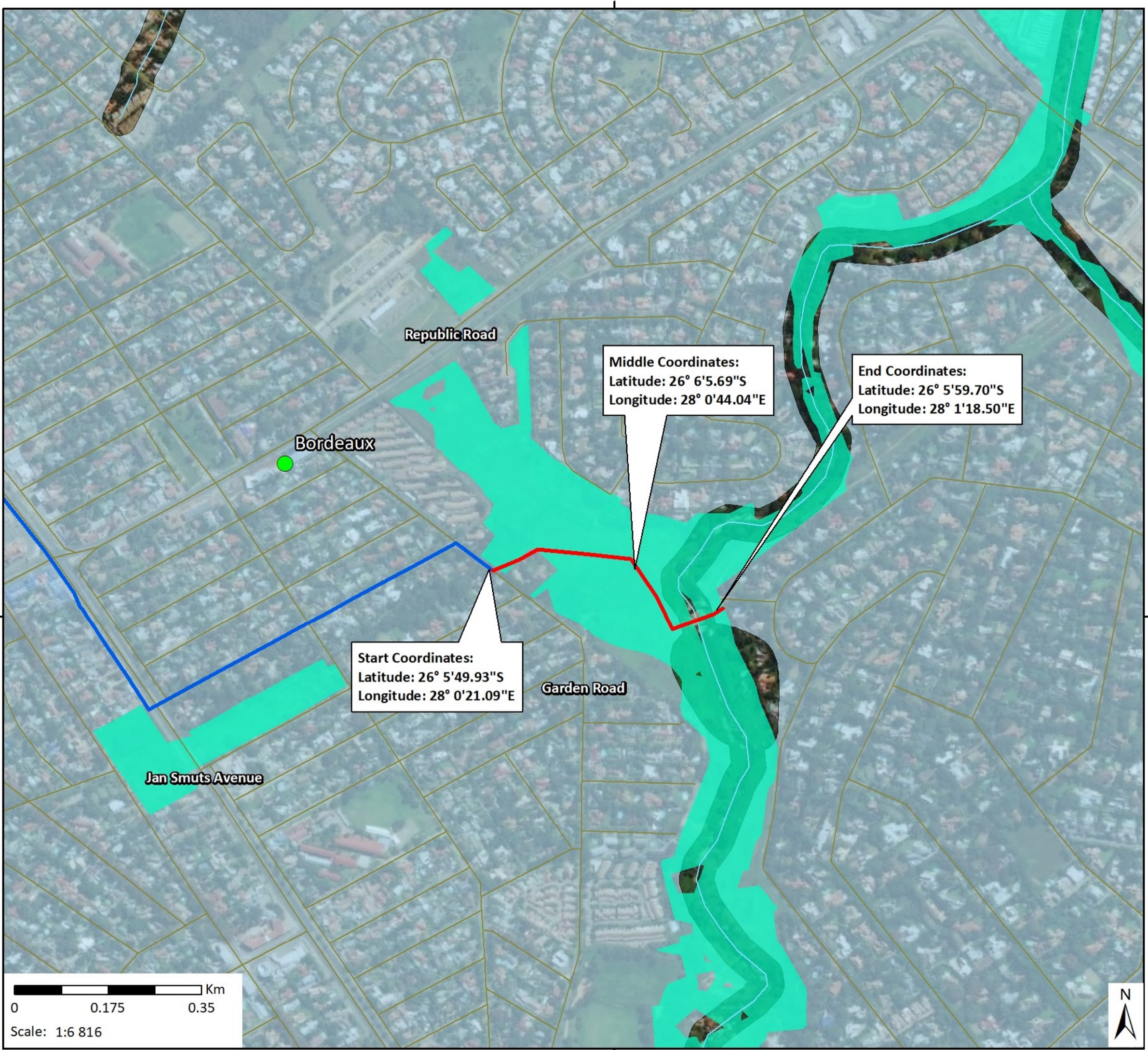


Data Sources:
 CSG; ESRI
 Coord System: GCS WGS 1984
 Datum: WGS 1984
 Units: Degree
 Ref: 1433 Delineated Wetlands



Date: 2021/11/19
 EIMS Ref:1433
 Compiled: CM
 Reviewed: BK
 Approved: LW

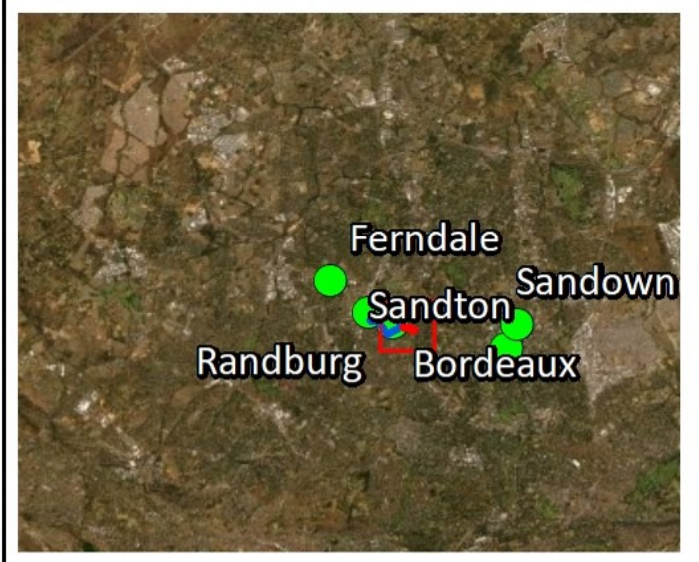




Proposed Sewer Pipeline: Environmental Triggers

1433 Selkirk Avenue Development Pipeline BA

- Legend**
- Places
 - █ Gauteng Conservation Plan
 - + Gauteng EMF: Zone 1
 - Proposed Sewer Pipeline**
 - Authorisation Not Required
 - Authorisation Required
 - Roads
 - ~ Rivers

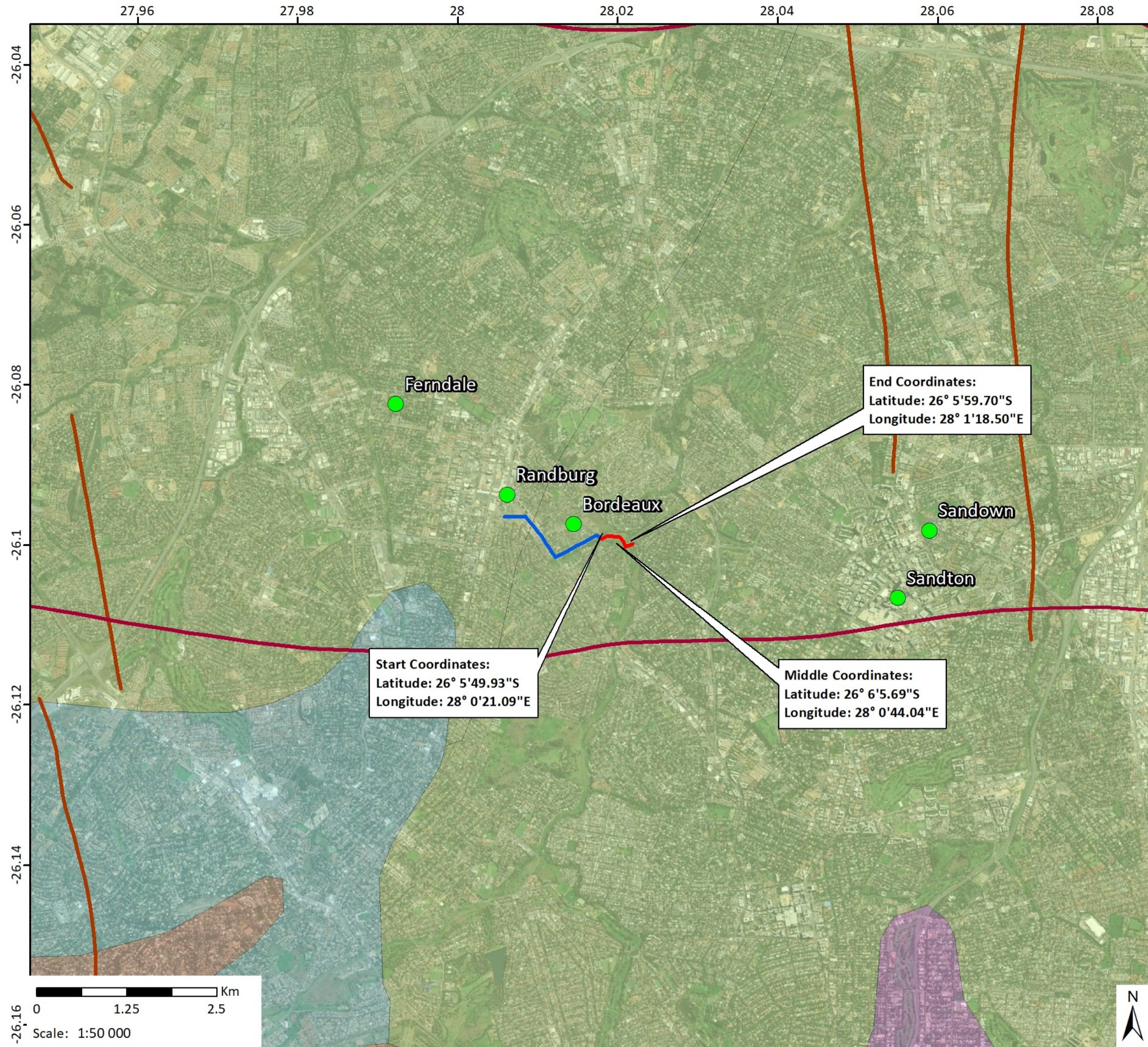


Data Sources:
 CSG; ESRI
 Coord System: GCS WGS 1984
 Datum: WGS 1984
 Units: Degree
 Ref:
 Proposed Sewer Pipeline 1433_Environmental Trigger

Date: 2021/09/08
 EIMS Ref:1433
 Compiled: CM
 Reviewed: BK
 Approved: LW



0 0.175 0.35 Km
 Scale: 1:6 816



Proposed Sewer Pipeline Locality
1433 Selkirk Avenue Development Pipeline BA

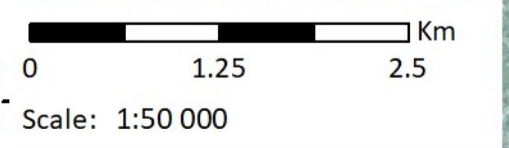
- Legend**
- Proposed Sewer Pipeline**
- Authorisation Not Required
 - Authorisation Required
 - Places
 - Undifferentiated Lineament
 - Diabase Dyke
 - Swazian Era
Description: Amphibolite, serpentinite, talc, schis, diorite, gabbro, pyroxenite
 - Swazian Era
Description: Dunite, harzburgite, pyroxenite, metagabbro, serpentinite, amphibolite, lava
 - Halfway House Granite
Description: Granodiorite (porphyritic in places), gneiss, migmatite
 - Hospital Hill SBGRP, West Rand GRP, Witwatersrand SPGRP
Description: Subequal shale and quartzite, minor conglomerate



Start Coordinates:
Latitude: 26° 5'49.93"S
Longitude: 28° 0'21.09"E

Middle Coordinates:
Latitude: 26° 6'5.69"S
Longitude: 28° 0'44.04"E

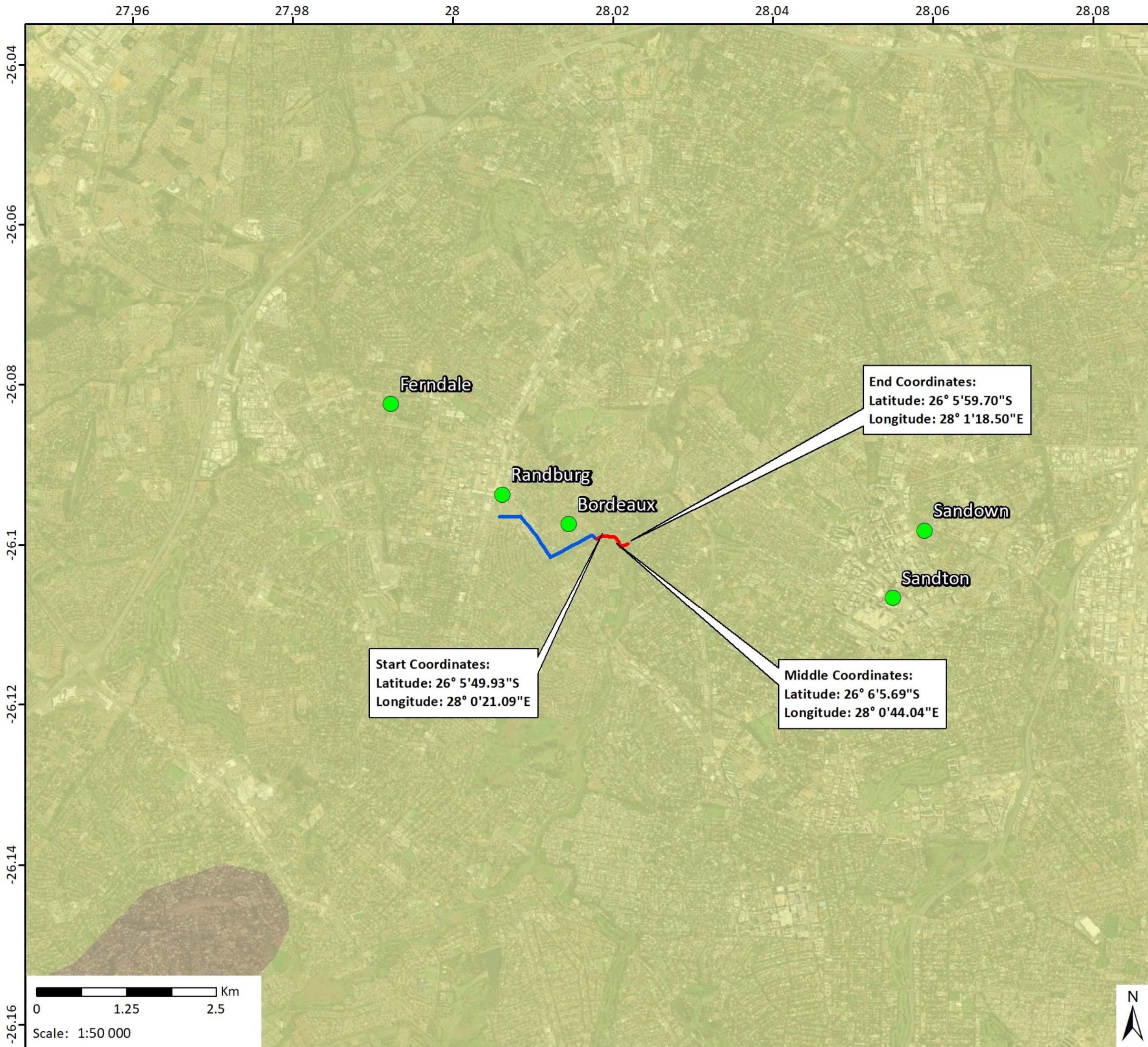
End Coordinates:
Latitude: 26° 5'59.70"S
Longitude: 28° 1'18.50"E



Data Sources:
CSG; ESRI
Coord System: GCS WGS 1984
Datum: WGS 1984
Units: Degree
Ref: Proposed Sewer Pipeline 1433_Geology

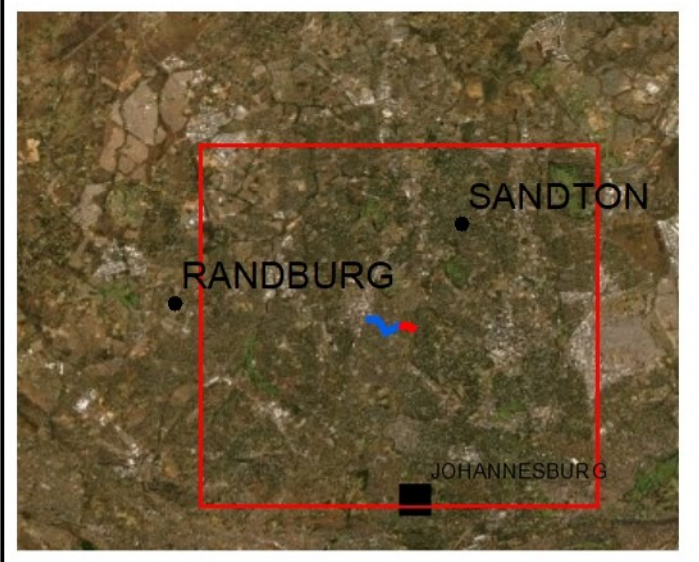
Date: 2021/06/25
EIMS Ref:1433
Compiled: CM
Reviewed: BK
Approved: LW





Proposed Sewer Pipeline Locality
1433 Selkirk Avenue Development Pipeline BA

- Legend**
- Proposed Sewer Pipeline
 - Authorisation Not Required
 - Authorisation Required
- Soils**
- LPq (Lithic Leptosols), Level Land: Plain
Gradient: <10%
Relief Index: <50 m/km²
 - PTa (Albic Plinthosols)



Start Coordinates:
Latitude: 26° 5'49.93"S
Longitude: 28° 0'21.09"E

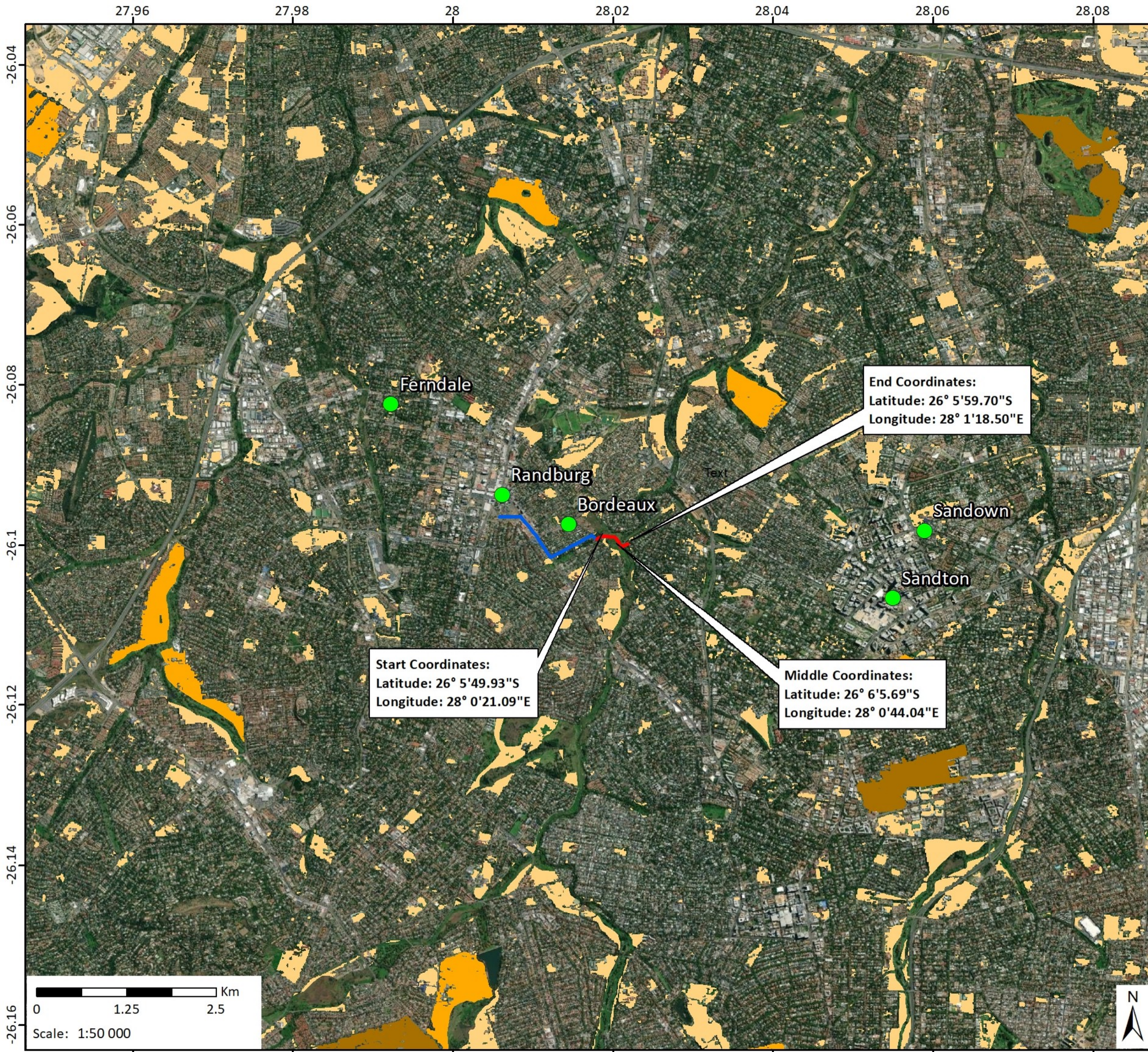
Middle Coordinates:
Latitude: 26° 6'5.69"S
Longitude: 28° 0'44.04"E

End Coordinates:
Latitude: 26° 5'59.70"S
Longitude: 28° 1'18.50"E

Data Sources:
CSG; ESRI
Coord System: GCS WGS 1984
Datum: WGS 1984
Units: Degree
Ref: Proposed Sewer Pipeline 1433_Soils

Date: 2021/06/30
EIMS Ref:1433
Compiled: CM
Reviewed: BK
Approved: LW





Proposed Sewer Pipeline
High Potential Agricultural Land
 1433 Selkirk Avenue Development Pipeline BA

Legend

- Places
- Proposed Sewer Pipeline
- Authorisation Not Required
- Authorisation Required
- High Potential Agricultural Land Class (GAPA4)
- 1
- 2
- 3

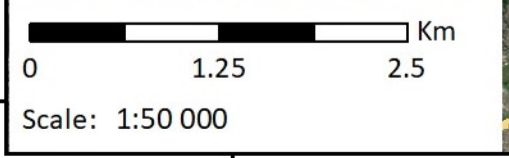
Start Coordinates:
 Latitude: 26° 5'49.93"S
 Longitude: 28° 0'21.09"E

Middle Coordinates:
 Latitude: 26° 6'5.69"S
 Longitude: 28° 0'44.04"E

End Coordinates:
 Latitude: 26° 5'59.70"S
 Longitude: 28° 1'18.50"E



Data Sources:
 CSG; ESRI, GAPA4
 Coord System: GCS WGS 1984
 Datum: WGS 1984
 Units: Degree
 Ref: Proposed Sewer Pipeline Agricultural Potential



Date: 2021/06/25
 EIMS Ref:1433
 Compiled: CM
 Reviewed: BK
 Approved: LW

